



The purpose of the Gem, Lapidary, and Mineral Society of Montgomery County MD, Inc. is “to increase knowledge and popular interest in earth sciences, geology, mineralogy, paleontology, lapidary arts, and related subjects.”

REGULAR MEETINGS

Meetings are held the 2nd Monday of the month from September to June. The Society will meet on **Monday, November 11, 2013**, in the dining room of the Rockville Senior Center, 1150 Carnation Drive, Rockville. A short business meeting will begin at 7:45 pm, but the room is available to us at 7:30 pm. Our speaker will be Juan Proaño. Juan studied mining engineering at the Universidad Nacional de Ingenieria, Lima, Peru, and economic geology at Stanford University, California. Juan was born in a mining camp in Peru, and his interest in mineral and fossil collecting began at a very early age. Both his grandfather and father were actively involved in the mining sector. He is a Life Member of the Gem, Lapidary, and Mineral Society of Montgomery County. His talk will be about the Tourmaline Rush in the State of Bahia, Brazil; Agate preparation facilities-Rio Grande do Sul; Gem specimens - Casa Stern, Rio de Janeiro, Brazil, and Imperial Topaz specimens-Belo Horizonte, Minas Gerais, Brazil, and Cerro Rico de Potosi, Bolivia.

BOARD OF DIRECTORS MEETING

Meeting will be held **Monday, November 18, 2013**, at the home of Andy Muir. All Board members are expected to be there. Any member is welcome to attend but kindly let Andy know if you plan to attend at amuir21@comcast.net or phone 301-990-1370.

PRESIDENT’S MESSAGE: HELLO FELLOW ROCKHOUNDERS

My wife Patricia is finally home. You will remember, she drove out to New Mexico with her sister to Carlsbad Caverns to pick lint off the formations. Then they went exploring for about a month. She didn’t come home on her own; I had to go get her. Maybe she wasn’t ready to come home, but I caught her anyway. One of the things she brought me is the book, *Everybody Needs a Rock* by Byrd Baylor, illustrations by Peter Parnell, probably related to our own Tom Parnell.

Of Course Everybody Needs a Rock! We all know this, from the youngest Mini-Miner to the oldest Member! I’m not talking, “want a rock,” I mean, “need a rock.” As they say in the Declaration of Independence, “We hold this truth to be self-evident!” Ms. Baylor lists 10 Rules for finding a rock and I think they’re good ones. I’ll only hit the highlights, ‘cause I only type with two fingers.

The rock you’re looking for could be anywhere, so stay alert. Don’t let friends and family deter you from your mission. They just haven’t discovered that they need a rock, too!

Don’t worry! Worrying will interfere with your search. Be in the moment. Don’t get a rock that’s too big. You’ll only hurt yourself. “A rock as big as a horse is MUCH too big.” I didn’t know that! A rock has to look good, feel good and smell good. I would add taste good, but I have yet to find, “The Big Rock Candy Mountain.” Finally, how will you know, you have found the rock? “You’ll know.”

Trust Yourself!

IN THIS ISSUE

Meeting Minutes	2
Member Update	3
Board Minutes	3
Fields Trips	4
Lure & Lore of Rocks	4
Society’s Auction	4
Mini Miners	5
FRA	5
Through the ‘Scope	5
Websites of Interest	6
Field Trip Happiness	6
Show Table	7
Upcoming Events	8
Bench Tips	9
2014 Officers	10

REMINDER

If schools in Montgomery County, MD, are cancelled or let out early because of weather on the day of a scheduled Society meeting, the meeting will be cancelled. If in doubt, call the Society President or a Board Member (numbers on the back of *The Rockhounder*).

Deadline for the December issue of *The Rockhounder* is November 25, 2013.

Andy B, Prez

SOCIETY MEETING MINUTES: OCTOBER 14, 2013

The meeting was called to order by President Andy Celmer at 7:42 pm with approximately 47 people in attendance (38 adults + 9 youth & children). It was M/S/P to approve the minutes of the September 9, 2013, regular meeting and of the September 16, 2013, BOD meeting.

Memberships: It was M/S/P to accept the membership applications of Walter & Diana Castro; and Mike Ciletti.

President: Andy Celmer announced awards from the Eastern Federation to GMLSMC members: Wendell Mohr for his exceptional work in producing the GMLSMC monthly newsletter, *The Rockhounder* and Conrad Smith for his internship in the Mineralogy Laboratory of the Smithsonian Institute. Andy also announced a successful first month "Box of Rocks" with plans to continue this activity. Andy called for assistance in converting his "Shop Manual" on how to set up and run the annual Gem & Mineral Show from hardcopy to electronic format. Diane Leaman volunteered.

FRA: Mark Dahlman presented awards to several of the young members.

EFML Liaison: Wendell Mohr announced 3 upcoming events: Ultraviolation on October 26th at Fairless Hills, PA; Friends of Mineralogy Symposium on November 2-3 at Franklin & Marshall College sponsored by the Tuscarora GLMS; and Northern VA Mineral Club Annual show on November 23-24 at George

Mason University, Fairfax, VA.

Eastern Federation Representative: Matt Charsky, officer in the Eastern Federation of Mineralogical & Lapidary Societies reported on the Annual conference of the American Federation of Mineralogical Societies 2013 annual meeting in Jacksonville, FL. Jean Charsky, EFMLS 4th Region Vice President, was also present.

Auction Report: Andy Muir reported on the Vance Jade Collection Auction at the Rockville Senior Center on October 12th, including that there were 9 other donors. Auctioneering was performed by members Wendell Mohr and Pat Jayne. Special thanks for their time. He indicated that the 2-person arrangement seems to be a great "template" for future auctioning events. 81 lots were sold with total proceeds \$2,200.00 from which \$1,400.00 is allocated to the GMLSMC.

Field Trips: Jonathan Harris announced field trip plans for the following: October 19th – Kurtz Limestone Quarry, Denver, PA; November 2nd – Join with NOVA Mineralogical club to collect at Vulcan Quarry, Manassas, VA; November 9th – GMLS-MC collecting trip at Vulcan Quarry, Manassas, VA; and November 16th – Collect at the Enterprise mine, in Central VA.

Show: Pat Repik-Byrne, Chairman of the GMLS-MC Annual Show announced the 2014 show dates of March 15 – 16 and asked members to start volunteering so she can start to plan for the set-up and exhibits. Pres. Andy Celmer volunteered to assist in early organizational efforts.

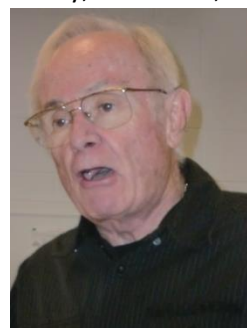
Outside Request: Jim Kostka announced the web-based call for volunteers to assist with the NOVA Show on November 23-24 at GMU, Fairfax, VA.

Presentation: "Ivory – Its Different Sources, Characteristics, Applications, and Importance" by Mr. William R. (Bobby) Mann, former Washington, DC Fire Department Captain and Co-founder of the National Ivory Society. Bobby brought in specimens of natural and carved ivory from animals (mammoth, elephant, walrus, narwhal, hippo, boar, warthog), plant (South American seed), and mineral (Sepiolite = Meerschaum). He gave a fantastic and fascinating talk and amazing, beautiful specimens that all members could handle and examine closely. Sincere thanks to Bobby Mann for his informative talk and for sharing his knowledge and specimens with us.

Give-aways: There were donations of mineral specimens were by: Jim



Photos by Kristin Lolmaugh



The Rockhounder

Kostka (Stilbite & Stellerite - Vulcan Quarry, Manassas, VA & Calcite & Strontianite - National Limestone Quarry, Mount Pleasant Mills, PA), Jonathan Harris (Wavellite - National Limestone Quarry, Mount Pleasant Mills, PA), and Dave Fryauff (Churchite – Kelly Bank Mine, Vesuvius, VA; Calcite – Medford Quarry, Mount Pleasant Mills, PA).

Adjournment: Meeting adjourned at 9:35 pm.

Dave Fryauff for Jeff Cessna, Secretary

BOARD MEETING MINUTES: OCTOBER 21, 2013

Andy Celmer called the meeting to order at 7:30 pm.

Board Members present: Doug Baum, Andy Celmer, Jeff Cessna, Jonathan Harris, Kristin Lolmaugh, Chris Luzier, Holly McNeil, Wendell Mohr, Pat Repik-Byrne, and Joel Rosen. **Guests present:** Mark Dahlman, Dave Fryauff, Andy Muir. **Board Members not present:** Eric Kindahl, Rod Towers.

Treasurer: Holly McNeil discussed the previously distributed treasurer's report. Holly will prepare a budget for discussion at the next board meeting. Prior to the meeting a motion was M/S/P for Holly to investigate re-establishing the club incorporation. After discussion, it was M/S/P to allocate the required funds and to establish Holly as the resident agent.

FRA: Mark Dahlman discussed upcoming FRA programs. He requested that the club purchase a projector to be used for FRA presentations. It was M/S/P to allocate approximately \$350 for the purchase using funds from the Lillian Turner Fund.

Show: Pat Repik-Byrne discussed the use of the newly-purchased used (DC) cases vs. the legacy cases. The DC cases will be set up by a selected group under the tutelage of Al DeMilo. The number of new fronts for legacy cases will be reassessed during the show. Pat will produce a plaque to honor Lillian Turner. She will distribute draft text. Wendell will supply a photo. Publicity for the show was discussed. Doug Baum will produce a poster and prepare a press release, coordinating with Petra Trebohansingh. Directional signage was discussed. It was M/S/P to purchase an additional 6 small signs and 6 large signs. Club member suggestions to celebrate the 50th club show were discussed. Options include a dinner, with speaker, or a display of the club history. Ideas were requested to increase show attendance on Sunday. Andy Muir will contact the Fairgrounds for final confirmation and payment.

Field Trips: Jonathan Harris will investigate printing the club logo on mugs to use as thank you gifts for quarry personnel.

EFMLS Liaison: Wendell Mohr discussed a request from GLMSDC to borrow our projector. Chris Luzier will attend the meeting and run the projector.

President: Andy Celmer will provide the slate of candidates for the upcoming election for publication in the *Rockhounder*.

Adjournment: The meeting adjourned at 9:18 pm.

Jeff Cessna, Secretary

PRIZE WINNERS!

Show Table:

Selenite, Australia – Wendell Mohr

General:

Malachite on Chrysocolla, Star of the Congo Mine, Democratic Republic of Congo – Walter Castro

CONGRATULATIONS!

MEMBER UPDATE

MOVED:

- Lisa Karp has moved. Her new address is 3142 Gracefield Road #612, Silver Spring, MD 20904-5858, LGCarp612@gmail.com

NEW:

- Walter, Diana, & Jean Castro, 11427 Scottsbury Terrace, Germantown, MD 20876-6010, 240-602-1884, wacastrop@gmail.com, dianacc37@hotmail.com

RETURNING:

- Michael Ciletti & Barbara Brooks, 20007 Hob Hill Way, Montgomery Village, MD 20886-266-3232, optimzielife.michael@gmail.com.

FIELD TRIPS

- **SATURDAY, NOVEMBER 2, 2013:** The Maryland Geological Society (MGS) would like to invite members of the GLMSMC for a fossil collecting trip this coming Saturday, November 2nd. We will be visiting a non-working open pit coal mine in Bear Valley which is just outside of Shamokin, PA. The site features a huge whaleback of shale which is covered by all manner of Upper Carboniferous (Pennsylvanian) shale fossils. On the last trip there member Gerald Elgert collected a dragonfly fossil. This could also be a 2-day trip as several from the MGS will then be driving to a marine Devonian site in Turbotville, PA, on Sunday. This site is known for horn corals and trilobites, amongst others. Please contact Gerald Elgert at (301) 681-5720 if you plan to come. We can meet in the Holiday Inn parking lot just north of Baltimore on I-83 at 7:00 am or just drive to the site.
- **SATURDAY, NOVEMBER 9, 2013:** Vulcan's Manassas Quarry, meet at 7:00 am - out by 11:00 pm or when the quarry employees have to leave. The rock is diabase, with one level having a layer of hornfels. This quarry has produced prehnite, apophyllite, calcite, amethyst, other quartz, chalcopyrite, pyrite, epidote, and zeolites -- stilbite, chabazite, heulandite, stellerite, and others. Respond to Jonathan Harris at jgharris7@gmail.com by November 3rd.

MEMBERSHIP DUES

Please remember to pay your dues. Single membership is \$15 per year, Family membership (defined as up to 2 adults and children younger than 18 years of age) is \$20 per year. There is a \$5.00 surcharge for late renewals.

Please send dues (check made out to GLMSMC) to Membership Chairman, Doug Baum, 11205 Golden Meadow Court, Germantown MD 20876-1740.

THE LURE AND LORE OF ROCKS: TIGER EYE

BY KRISTIN LOLMAUGH

Tiger Eye gets its name from the beautiful golden eyes of the powerful tiger. Some believe that it provides you with insight and clear thinking. It helps us see ourselves and the world around us more perceptively. When we keep our eyes wide open, we are more apt to act appropriately and at the appropriate moment. It is also thought that when used in jewelry the tiger eye can bring the wearer good luck and protection from the evil eye. It is a stone for the mind, not the body, focusing the mind. When the tiger eye is cut into cabochons chatoyancy is as hypnotic as the eye of an actual tiger.



Photos by Kristin Lolmaugh

SOCIETY'S AUCTION

Our Society's auction, held October 12th, was another great success. There were 29 registered bidders, plus a few other attendees. Nearly everyone got something nice to take home (23 bidders made purchases -- some made quite a few!). We auctioned off items donated by ten different generous donors for a total of 81 lots, plus a few books.



Photos by Jonathan Harris

MINI MINERS Ages 6-9

Next Meeting Date: November 11, 2013

Time: 7:00 - 8:00 pm

Location: Card Room, Rockville Senior Center



The Mini-miners learned about the making of craters.

FUTURE ROCKHOUNDS OF AMERICA (THE MOCKS) Ages 10-15

Next Meeting Date: November 11, 2013

Time: 7:45 - 9:00 pm

Location: Sunroom Cafeteria, Rockville Senior Center

October 14th Meeting:

At the FRA meeting in October, we learned about the properties of gold versus “fool’s gold,” or pyrite. There was a hands-on session of “Are you stronger than covalent bonds?” as well as marveling at how malleable gold is. We heard about gold panning in Pennsylvania thanks to one of our member’s report on their family trip, as well as how colored gold is made. We also talked a bit about terms for the purity of gold used in jewelry.



November 11th Meeting:

We’re continuing our study of gold for one more meeting. At our November meeting FRA members who would like to earn the Gold Panning and Prospecting badge should come prepared to present information or submit a paper about uses of gold (badge requirement 12.2), gold throughout history (badge requirement 12.3), or gold resources in our state or region (badge requirement 12.4). Three activities are needed to earn the badge. (Those members that went on the Lake Anna field trip have satisfied the gold panning activity, and those members who attended our October meeting satisfied the activity for learning differences between gold and pyrite – the gold vs. pyrite quiz will be available at the November meeting for anyone who missed the October meeting.)

For more information on the Future Rockhounds of America program, please contact Mark Dahlman at <fra_advisor@glmsmc.com> or 301-428-0455.

THROUGH THE MICROSCOPE

BY KRISTIN LOLMAUGH

Have you ever noticed the gentleman in the corner prior to the meetings? He is usually peering through a microscope. During the September meeting Rod Tower invited me to look through the microscope and then helped me take a picture of this beautiful ruby with the multi-layer chatoyancy creating a star. If you haven’t talked to Rod about the microscopic images he sets up, please do – he is knowledgeable and enthusiastic.

Photos by Kristin Lolmaugh



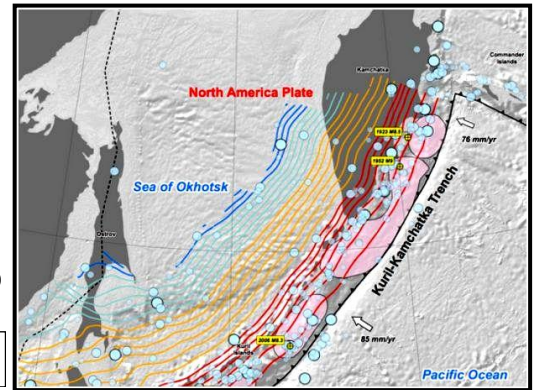
WEBSITES OF INTEREST

BY WENDELL C. MOHR

Puzzle Over Largest Deepest Earthquake Ever Recorded

At <http://news.ucsc.edu/2013/09/deep-earthquake.html> is a site discussing the magnitude 8.3 quake on May 24, 2013, 378 miles deep in the subducting Pacific plate beneath the Sea of Okhotsk near Kamchatka, Russia. University of California scientists at Santa Cruz published information in the September 20th *Science Magazine*. The perplexing thing is how could rock slide against rock so fast while squeezed by lots of overlying rocks. Seismologists believe that the slippage was from 2 up to 10 meters. A conjectural cross section is shown.

Map Courtesy of The United States Geological Survey



Update on Sapphire Mining in Ilakaka-Sakara, Madagascar by Vincent Pardieu, Gemological Institute of America Inc., is at <http://www.gia.edu/gia-news-research-Sapphire-Mining-Ilakaka-Madagascar>. The location of the deposits, history since discovery in 1998, and mining operations are covered. A gallery of 16 photos of operations in the area is included. 10 to 20 thousand miners toil here for rubies as well as sapphires at what might well currently be the world's largest source of the gemstones.

Faceted Sapphires credit R.Weller/Cochise College

Tips on How to Become a Fossil is from the *National Geographic Society Daily News* by Brian Switek. This light spirited article discusses how YOU might become a fossil, in one form or another. The "Comments" listed are to be read. See <http://news.nationalgeographic.com/news/2013/08/130810-fossil-science-paleontology-future/>.



FIELD TRIP HAPPINESS IS:

1. Having to ask for help to carry your crystal back to the truck.
2. Finding a geode as big as a basketball and weighing as much as a golf ball.
3. Finding all those big and beautiful specimens on the ground without having to dig for them.
4. Finding that the "fools' gold" on your quartz . . . isn't.
5. Your rock hounding partner telling you the snake you sat on is a garter snake.
6. Your rock hounding leader telling you the hike up the hill is a mile, and it is only half a mile.
7. Finding the biggest and best "bragging rock" on the field trip.
8. Stumbling over a yucky flat piece of sandstone and finding a complete fossil on the back.
9. Discovering that the old rock you used to block your truck wheel so it would not roll away is really a baseball-size hunk of facet-grade topaz.

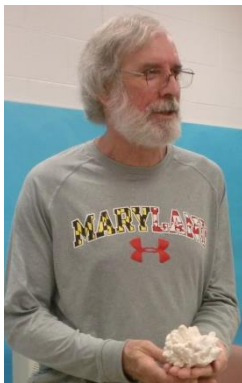
*From The Skin-Skinner News, June 2006
via Ooe Shoe - via SCFM Newsletter. March-April, 2006*

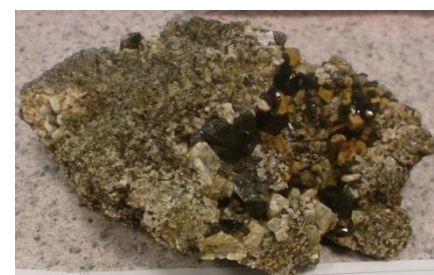
SHOW TABLE: October 2013

Thanks to those who bring items for sharing at the meetings.

Exhibitor	Specimen (s)*	Locality
Kristin Lolmaugh	Petrified Wood	Do Bell Ranch, Holbrook, AZ
Frances Becker	Pyrite Cubes on Shale	Nova Scotia, Canada
Gary Leaman	Pink Grossular Garnet	Sierra de Las Cruces, Coahuila, Mexico
Diane Leaman	Adamite	Ojuela Mine, Mapimi, Durango, Mexico
Tom Parnell	Druse Quartz* Garnierite Druse Quartz* Almandine Garnet* Smoke Quartz & Microcline*	Adams Brook Nickel Prospect, Newfane, VT Adams Brook Nickel Prospect, Newfane, VT Little Pine Garnet Mine, Madison County, NC Moat Mountain, Conway, NH
Gerald Elgert	Petrified Cypress Wood	Holbrook, AZ
Pat Repik-Bryne	Pyritized Selenite Crystals	China
Barbara Burr	Unknown	TN
Wendell Mohr	Smoky Quartz	Florissant, CO
Jim Kostka	Kabamba Jasper	Madagascar
Mary Ann Beall	Mystery Rocks	Backyard
Joel Rosen	Aragonite	Crystal Cave, SD
George Durland	Microcline	Diamar District, N. Areas, Pakistan
Dave Fryauff	Churchite*	Kelly Bank Mine, Vesuvius, VA
Boe Brosius	Granite Corundum	Unknown Unknown
Andy Celmer	Unknown*	Elkton, WV, Quarry
Andy Muir	Wavellite*	Mt. Pleasant Mills, PA
Jonathan Harris	Wavellite* Kyanite*	Mount Pleasant Mills, PA Willis Mountain Kyanite Mine, VA
Chuck Mason	Petrified Wood	Arizona
Linda Smith	Biotite Mica Feldspar	Kensington, MD
Conrad Smith	Muscovite Ore, Fluor apatite*	Kensington Mica Mine, Kensington, MD

* indicates self-collected or self-made





UPCOMING EVENTS NOVEMBER

- November 2, 2013** – Symposium for mineral enthusiasts; Friends of Mineralogy PA Chapter, Hackman Physical Sciences Building, Franklin and Marshall College. Doors open at 8:30 am; sales by select dealers, silent auction, give-away table; talks planned by expert speakers on Pennsylvania Mineralogy, Geology and Mining: Ron Sloto, William Kochanov, Robert Beard, and Stan Mertzman; Registration (form on web site): Current members \$15.00 non-members \$25.00; field trip (location to be announced) open only to symposium attendees on November 3rd; www.rasloto.com/fm.

- **November 9, 2013 – The 22nd Annual Richmond Gem & Mineral, Society Rock Sale and Swap**, Saturday, 9:00 am to 3: 00 pm (Setup available at 7:00 am), Ridge Baptist Church Meeting Hall, 1515 East Ridge Road, Richmond, VA 23229
- **November 23-24, 2013 – 22nd Annual Gem Mineral and Fossil Show**, Hub Ballroom, George Mason University Campus, 4400 University Drive, Fairfax, VA – Parking Lot A, Saturday 10:00 am – 6:00 pm, Sunday 10:00 am – 4:00 pm, www.novamineralclub.org.
- **November 29 – December 1, 2013 – 34th Annual Gem and Mineral Show**, Salem Civic Center, 1001 Roanoke Blvd, Salem, VA 24153, 2:00 PM - 6:00 PM, Admission \$4.50, good for all 3 days. Children under 16 admitted FREE!
- **Patuxent Lapidary Guild** is offering cabbing and silversmithing classes – visit www.patuxentlapidary.org.

BENCH TIPS: MARKING YOUR TOOLS

BY BRAD SMITH

It makes sense to mark your tools if you ever lend them to friends or take them out to classes or workshops. Question is how to mark them permanently. For metal tools, I use a very small ball bur running fast in the Dremel or Foredom to "engrave" my initials. Other times I'll form the initials with a number of hits with a center punch.

But for hammer handles and other wooden tools, the country boy in me came back and thought "Why not make a branding iron?" If you'd like to try one, all you need is a little scrap copper or nickel about 22-24 gauge, a piece of heavy brass or copper for a base, about 6 inches of metal rod and a piece of wood for the handle.

I formed my initials from a couple 4mm strips of sheet nickel. The "S" was one piece, but the "B" was three pieces soldered together with hard solder. (Remember to form the letters backwards). I then soldered the letters with medium onto a piece of 1/8 inch thick brass bar to act as a heat sink. Finally, I soldered a piece of 1/8 inch round rod on the back of the brass bar as a shaft to join to a wooden handle.



*More Bench Tips by Brad Smith are at [facebook.com/BenchTips/](https://www.facebook.com/BenchTips/) or see the book *Bench Tips for Jewelry Making* on Amazon*

OFFICERS FOR 2014

During the November meeting, members will have the opportunity to vote for some new officers. Below is the slate for the positions to be voted on with the members running for the offices.

President – Christopher Luzier
Vice President – David Tiktinsky
Treasurer – Holly McNeil
Secretary – David Fryauff

If you are planning a trip and want to know what clubs you might be able to visit, it would be worthwhile to visit the American Federation of Mineralogical Societies website. Check out their newsletter archives at <http://www.amfed.org/news/default.htm>.



BOARD OF DIRECTORS

President – Andy Celmer, 4798 Mid County Court, Monrovia, MD 21770-9417, 301-305-0229
 Vice President – Chris Luzier, 847 Springdale Drive, Millersville, MD 21108-1436, 443-995-5363
 Secretary – Jeff Cessna, 12116 Cliftdale Drive, Silver Spring, MD 20904-1941, 301-680-7963
 Treasurer – Holly McNeil, 22 South Duke Street, Rockville, MD, 20850-1014, 301- 605-7179
 Junior Advisor – Rod Towers, 19609 Gunners Branch Road, Germantown, MD 20876-2738, 301-972-1264
 Field Trip Chairman – Jonathan Harris, 11932 Goya Drive, Potomac, MD 20854-3313, 301-545- 0808
 Membership Chairman – Doug Baum, 11205 Golden Meadow Ct., Germantown, MD 20876-1740, 301-515-4641
 Show Chairperson – Pat Repik-Byrne, 9 Starlight Court, Potomac, MD 20854-2658, 301-279-5962
 Property Manager – Joel Rosen, 833 Rampart Way, Union Bridge, MD 21791-9325, 410-775-7937
 Immediate Past President – Eric Kindahl, 301 Violet Court, Mount Airy, MD 21771-5206, 301-820-2161
 EFMLS Liaison – Wendell Mohr, 9509 Emory Grove Road, Gaithersburg, MD 20877-3501, 301-926-7190
 Bulletin Editor– Kristin Lolmaugh, 1282 Terrace Lane, Arnold, MD 21012, 410-647-2959

Life Members: Larry Harrison, Wendell Mohr, and Juan Proaño

Society Address: Gem, Lapidary, and Mineral Society of Montgomery County MD., Inc.
 P. O. Box 444, Gaithersburg MD 20884-0444; Web Site: <http://www.glmsmc.com/>
 All Society correspondence is to be sent to this address except that which is intended for the *Rockhounder* and its editor. Such items are to be sent to the editor’s email address – kristinlolmaugh@gmail.com

Permission to copy material printed herein, except specifically copyrighted items, is granted, provided credit is given.

Award Winning Bulletin
EFMLS, AFMS



TIME SENSITIVE
DATED MATERIAL
FIRST CLASS MAIL

THE ROCKHOUNDER
 Gem, Lapidary, and Mineral Society
 of Montgomery County, MD, Inc.
 Kristin Lolmaugh
 1282 Terrace Lane
 Arnold, MD 21012